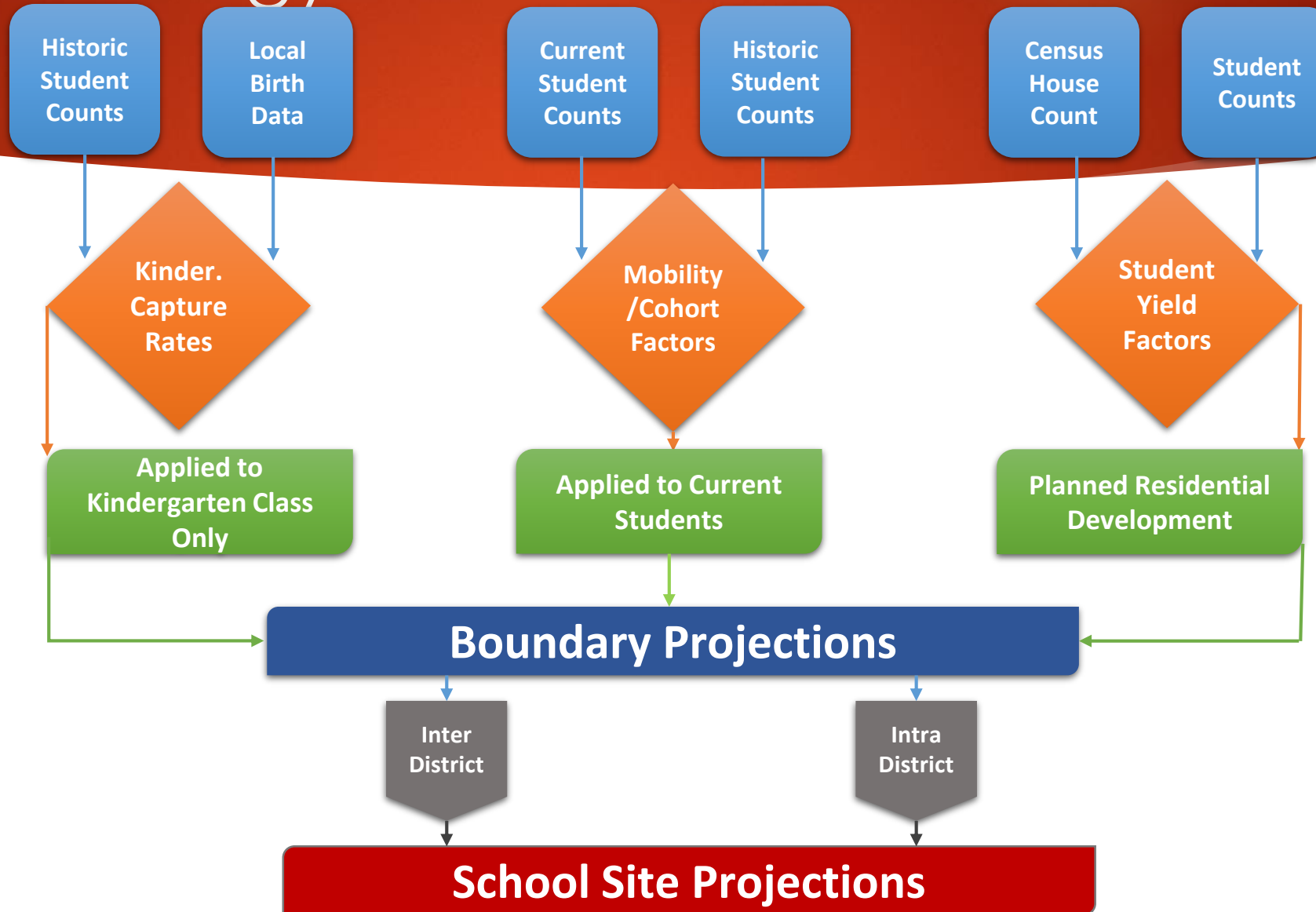


Alum Rock Union School District 2021/22 Demographics & Enrollment Projections



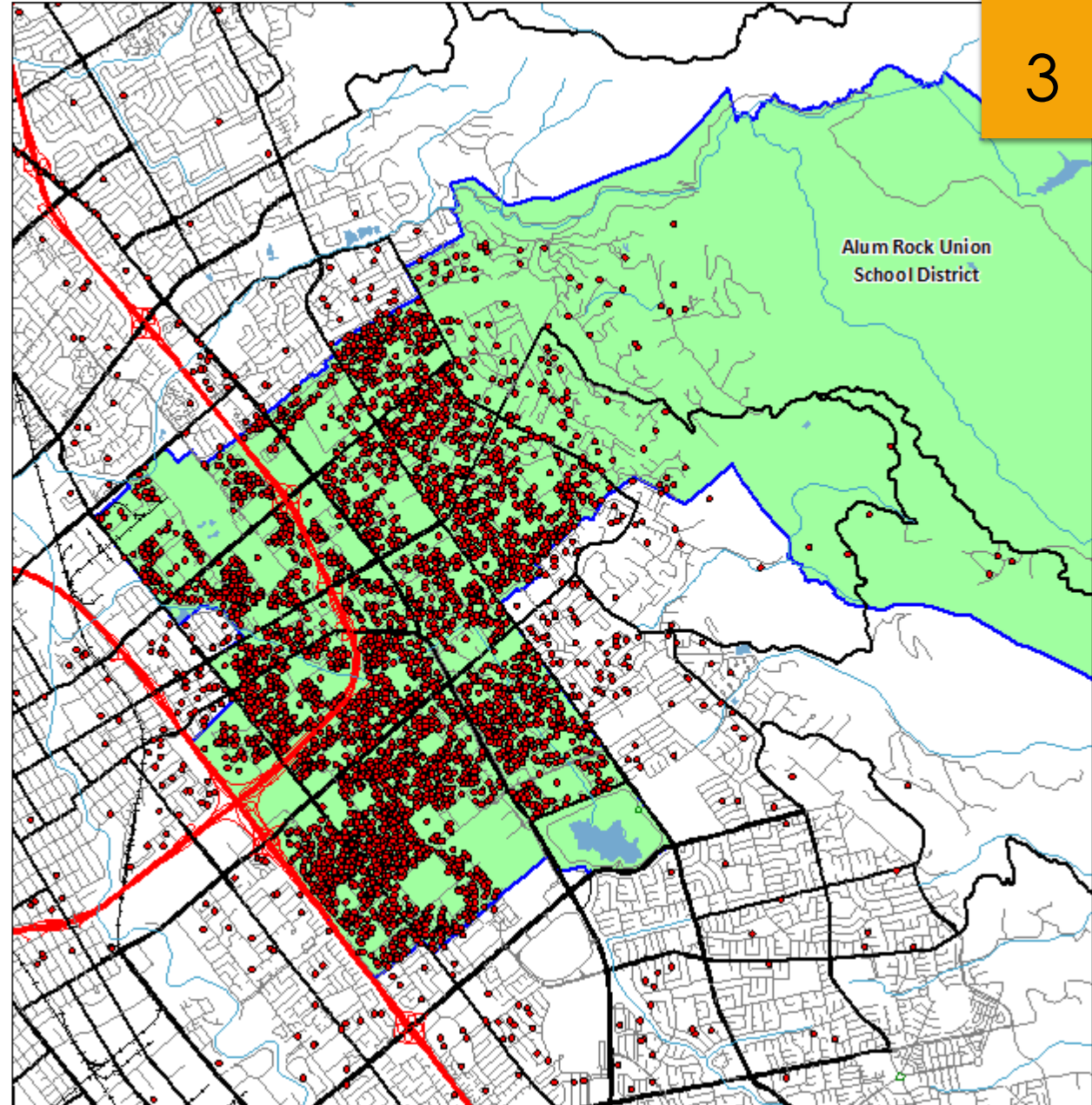
Methodology

2

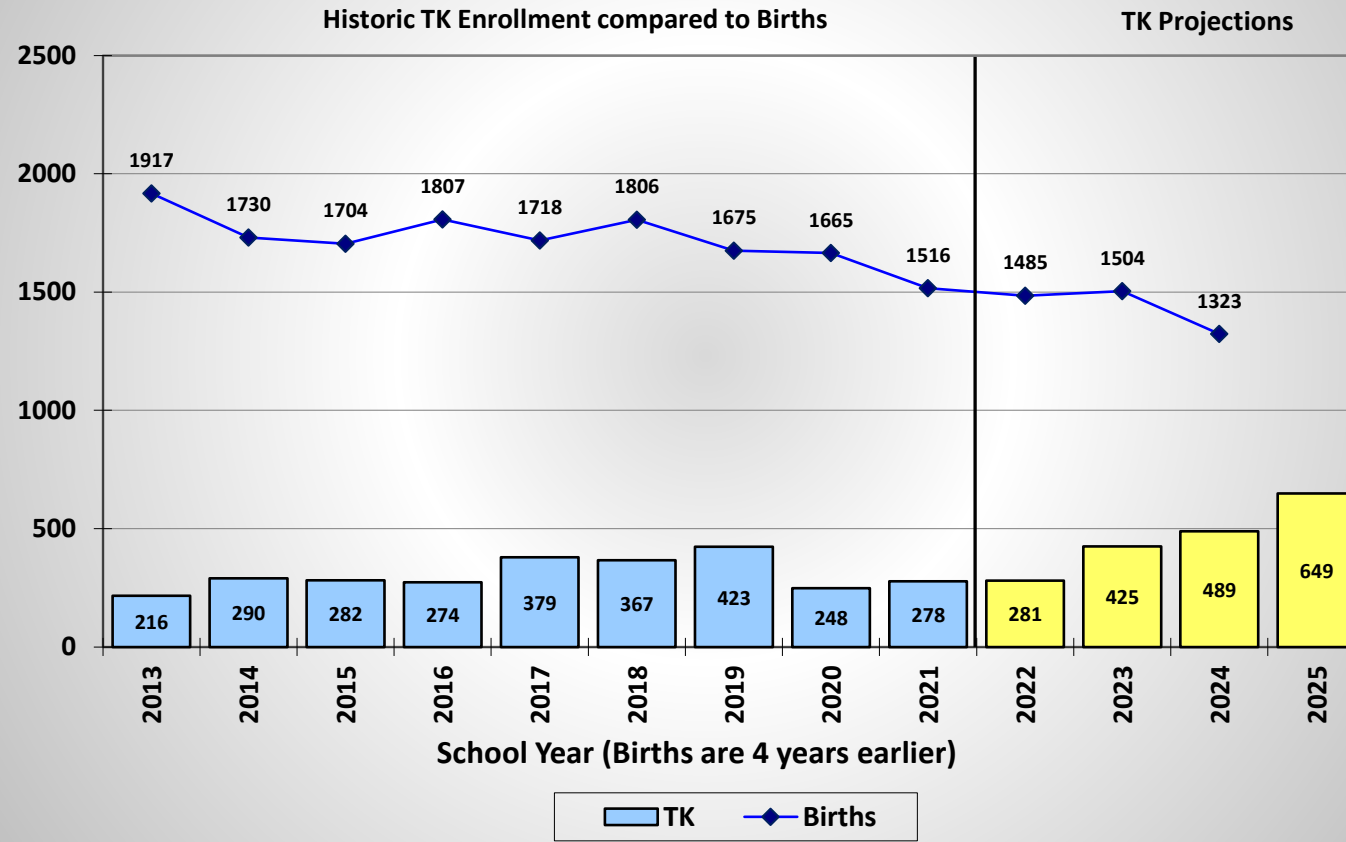


District Map & Student Distribution

- ▶ District information is input into a GIS program for analysis.
- ▶ Students are “geocoded” based on their current residential address.



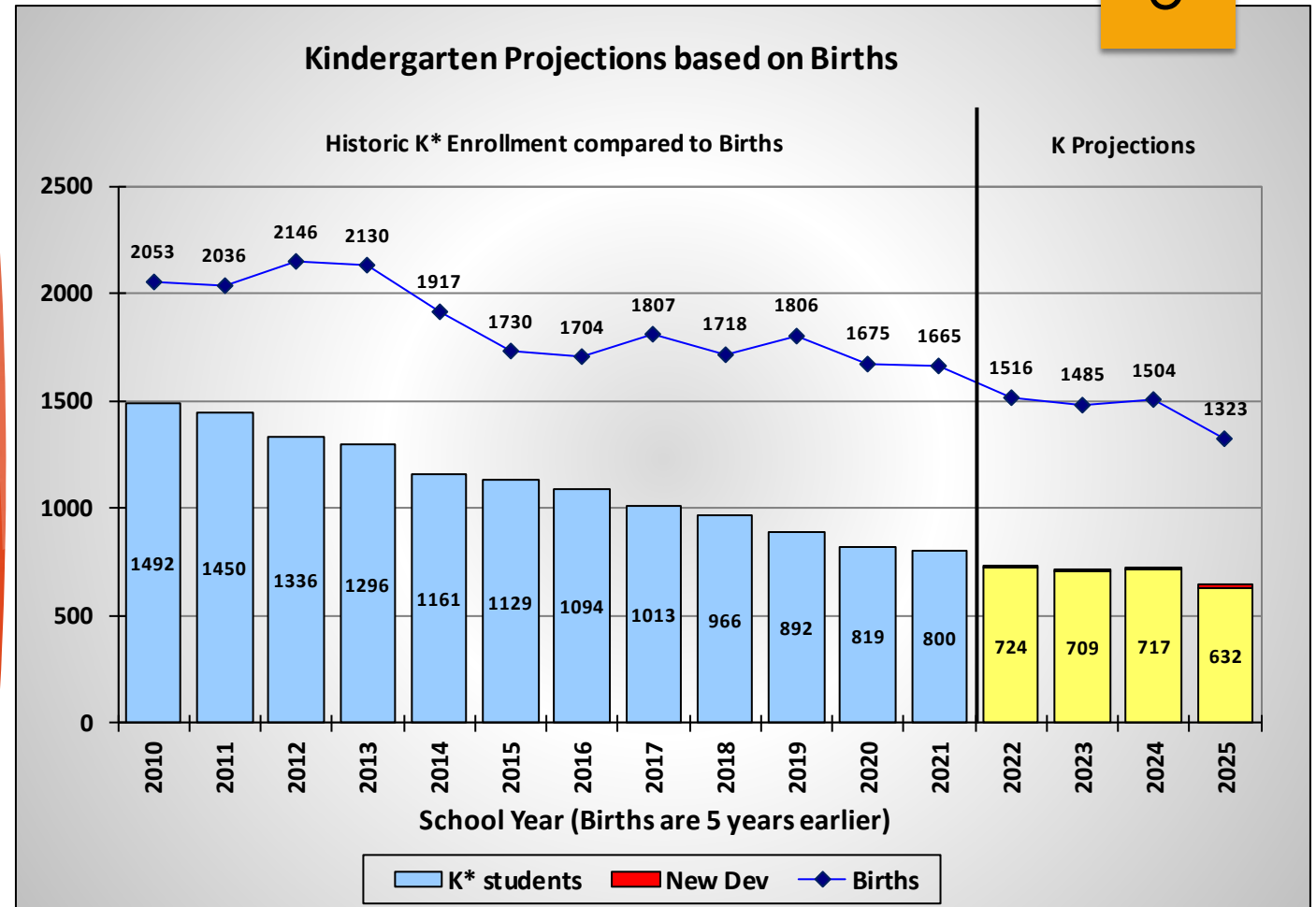
TK Projections based on Births



Transitional Kindergarten Projections

Birth Rates

► This chart shows correlation between births in the District area and the number of kindergarten students attending schools five (5) years later.

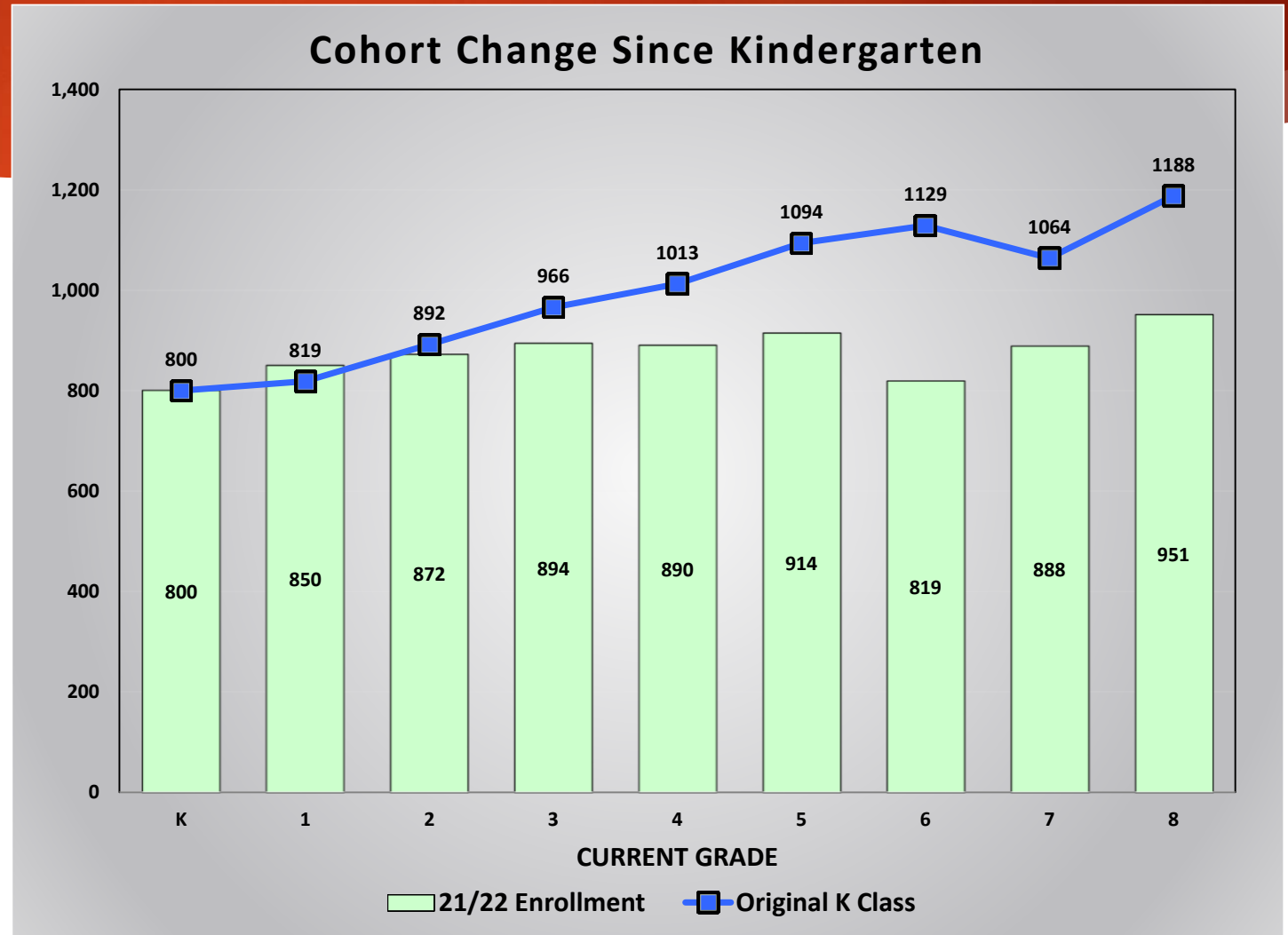


*Kindergarten Totals may include some Transitional Kindergarten students for some of the past years to more accurately correlate a 12-month period of births to a 12-month period of enrollment.

Cohort Change Since Kindergarten

6

This chart compares the original kindergarten class size to the current enrollment for each grade.



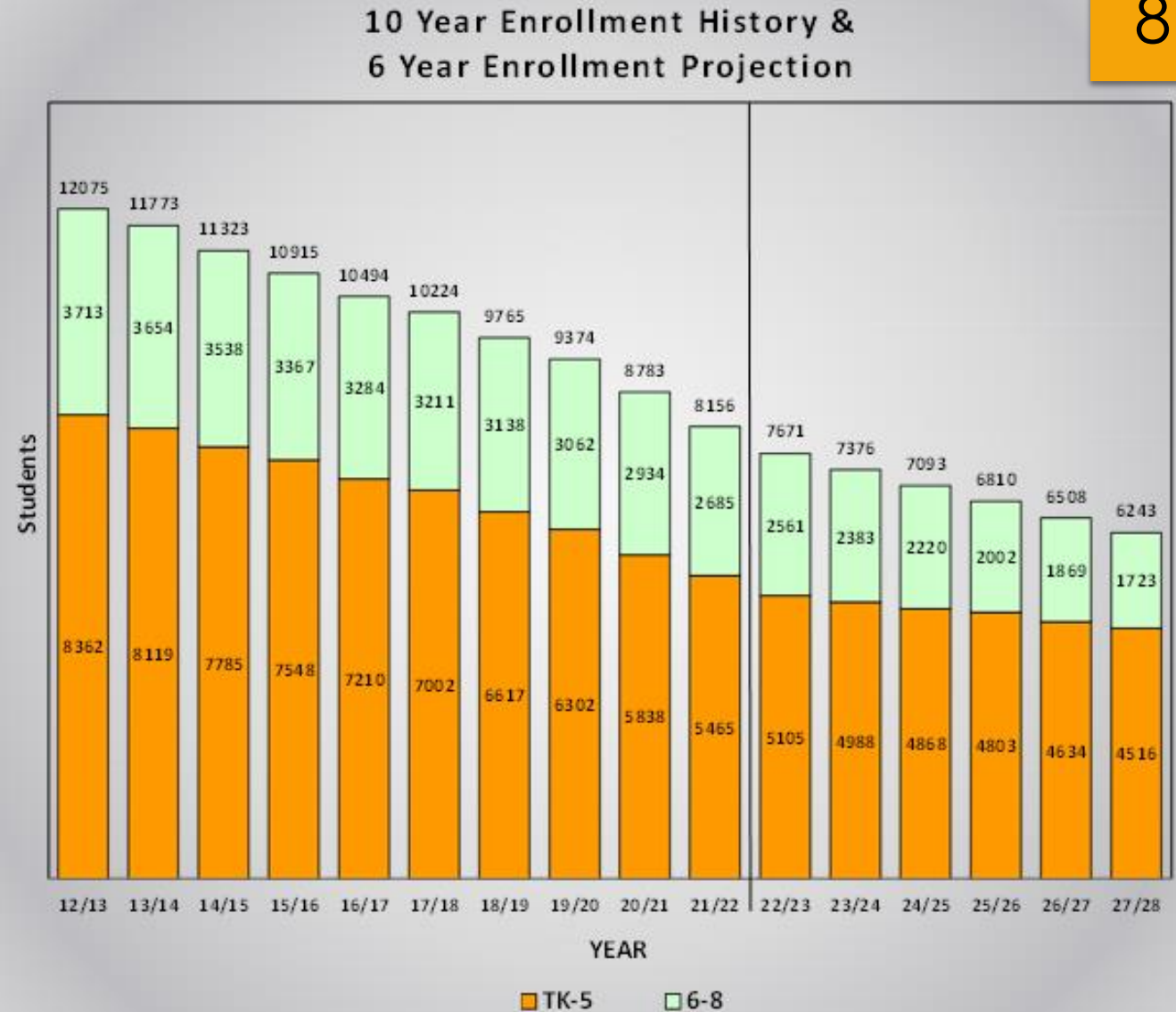
**Alum Rock Union School District
Historic Enrollment and Cohorts**

<u>Grade</u>	<u>CalPADS Enrollment</u>				<u>Historic Cohorts</u>			<u>Non- Weighted</u>
	<u>18/19</u>	<u>19/20</u>	<u>20/21</u>	<u>21/22</u>	<u>18 to 19</u>	<u>19 to 20</u>	<u>20 to 21</u>	<u>Average</u>
T K	367	423	248	276	56	-175	28	-30.3
K	966	892	819	761	-74	-73	-58	-68.3
1	968	921	880	828	-45	-12	9	-16.0
2	1,044	948	889	845	-20	-32	-35	-29.0
3	1,026	1,017	920	867	-27	-28	-22	-25.7
4	1,021	965	998	864	-61	-19	-56	-45.3
5	1,019	937	891	883	-84	-74	-115	-91.0
6	1,021	962	891	809	-57	-46	-82	-61.7
7	1,010	1,001	952	871	-20	-10	-20	-16.7
8	1,009	1,002	994	936	-8	-7	-16	-10.3
SDC	314	306	301	216	-8	-5	-85	-32.7
Totals	9,765	9,374	8,783	8,156	-31.6	-43.7	-41.1	-38.8
Annual Change:		-391	-591	-627				

Historic Enrollments & Cohorts

Enrollment History & Projections

► This chart provides a summary of the last ten (10) years of historic enrollment and projected enrollment for the next six (6) years.



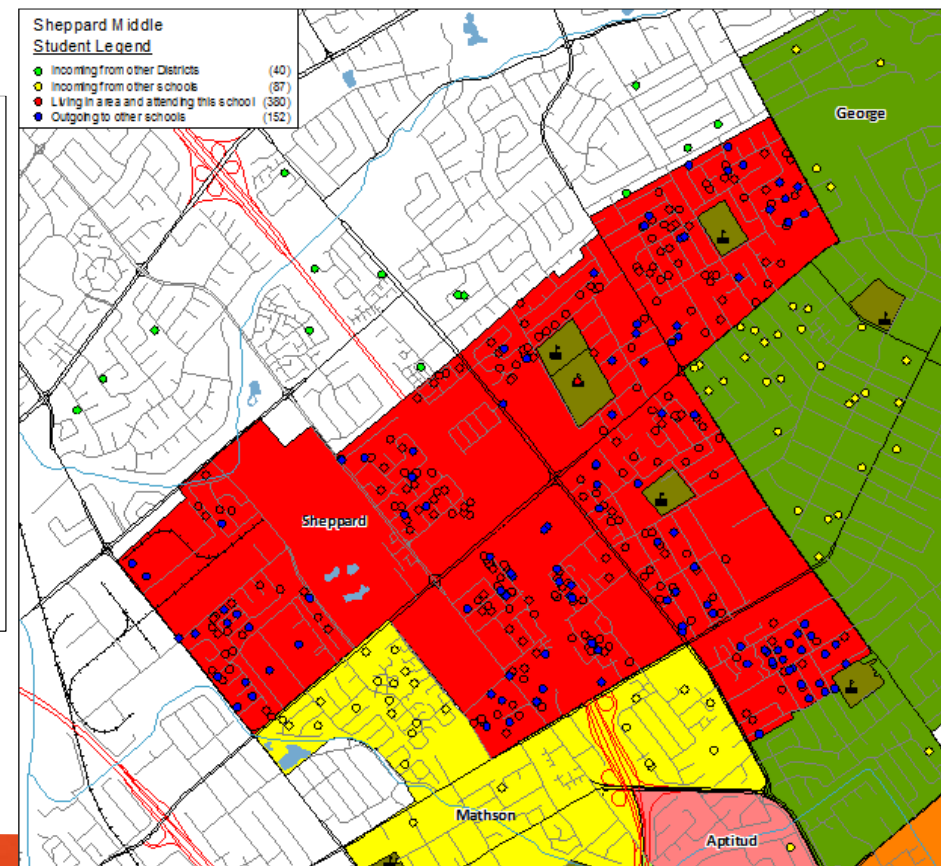
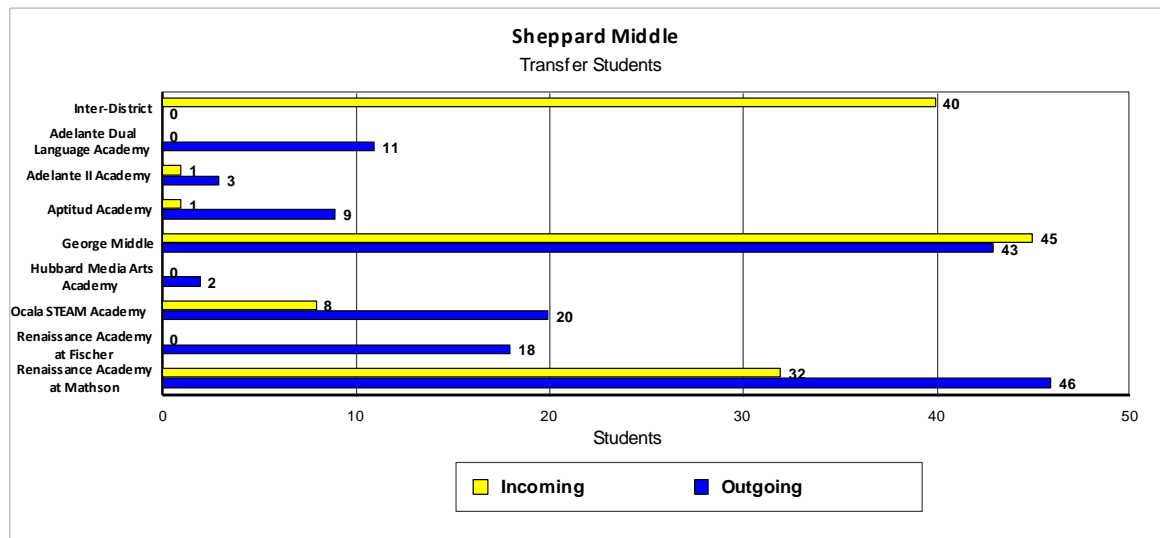
Classroom Counts & Loading Factors

The capacity for each school was determined by using the following loading standards for each classroom identified:

<u>Grade</u>	<u>Loading</u>
TK	20
K-3	24
4-8	31

Alum Rock Union School District Classroom Count Summary

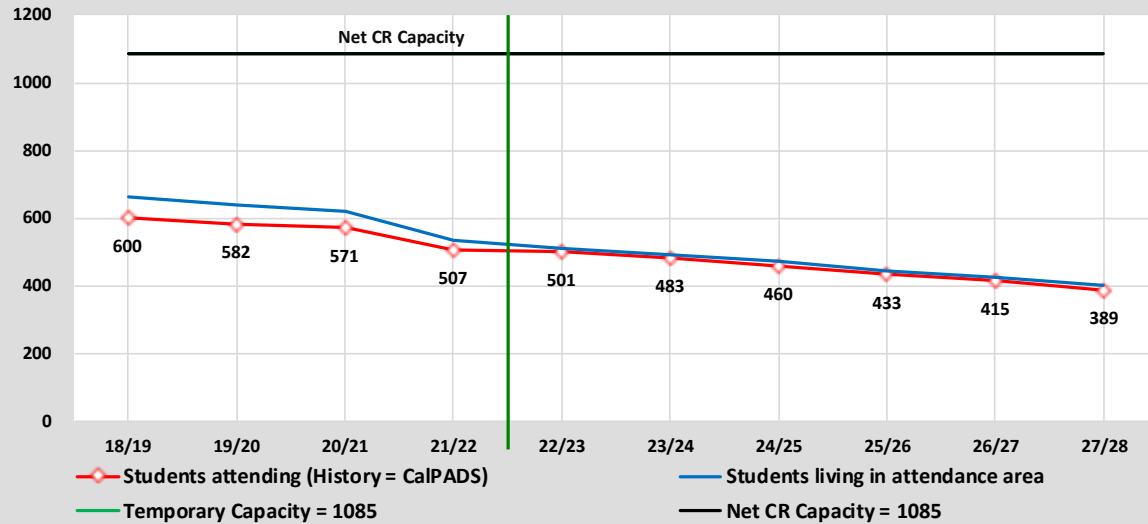
<u>Elementary Schools</u>	<u>Net CR Count</u>
Cassell Elem	29
Chavez Elem	32
Cureton Elem	32
Dorsa Elem	28
Linda Vista Elem	34
LUCHA	13
Lyndale Elem	31
McCollam Elem	28
Meyer Elem	30
Painter Elem	27
Russo McEntee Academy	34
Ryan STEAM Academy	23
San Antonio Elem	22
Sub-Totals	363
<u>Middle Schools</u>	
George Middle	29
Ocala STEAM Academy	32
Renaissance Academy at Fischer	42
Renaissance Academy at Mathson	37
Sheppard Middle	35
Sub-Totals	175
<u>TK-8 Schools</u>	
Adelante Dual Language Academy	20
Adelante II Academy	24
Aptitud Academy	22
Hubbard Media Arts Academy	37
Sub-Totals	103
District Totals	641



Sample of Map & Chart Provided For Each School

Demographics Sample Map

Capacity & Projected Enrollment Sheppard Middle



District Loading Standards
Traditional School
All Portables Loaded
Net Classroom Count = 35
Grades Served = 6 - 8

Classroom Needs Timeline

Year	Total Students*	Annual Change	Spec. Ed. Students	Net CR Capacity	Unhoused Students	Annual CR Needed	Total CR's Needed	Available Seats	Projected Housing Units
21/22	507	-64	1	1085	0	0	-19	578	0
22/23	501	-6	1	1085	0	0	-18	584	0
23/24	483	-18	1	1085	0	0	-19	602	83
24/25	460	-23	1	1085	0	0	-20	625	83
25/26	433	-27	1	1085	0	0	-21	652	0
26/27	415	-18	1	1085	0	0	-22	670	0
27/28	389	-26	1	1085	0	0	-22	696	0

* Based on Students Attending (Squares on Graph)

Net Classroom Count = 35

Sample Enrollment Projection

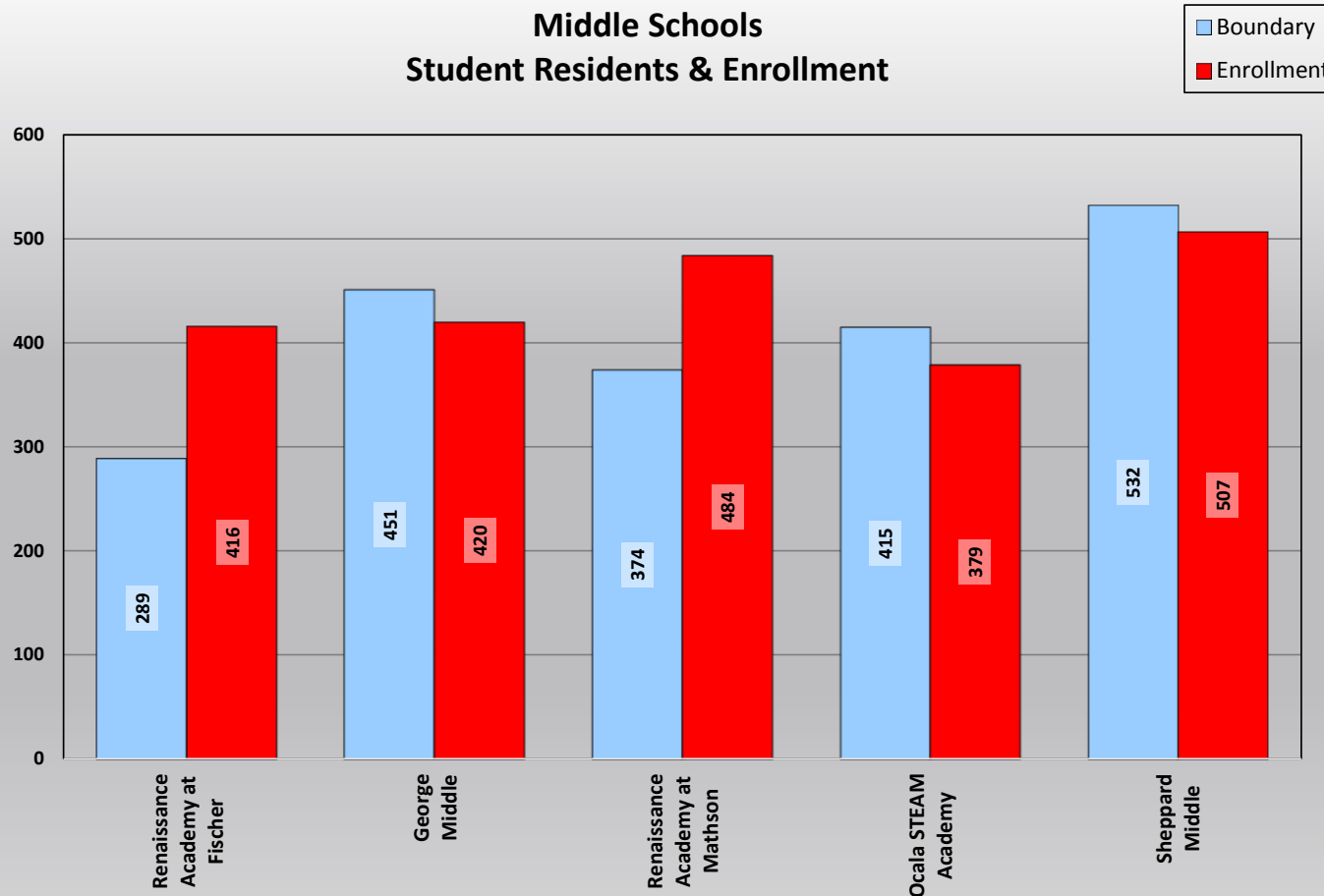
Sample of Graph Provided For Each School

ATTENDANCE MATRIX

SCHOOL: AREA	SCHOOL OF ATTENDANCE																	Total Residing
	Adelante Dual Language Academy	Adelante II Academy	Aptitud Academy	Cassell Elem	Chavez Elem	Cureton Elem	Dorsa Elem	Hubbard Media Arts Academy	Linda Vista Elem	LUCHA	Lyndale Elem	McCollam Elem	Meyer Elem	Painter Elem	Russo McEntee Academy	Ryan STEAM Academy	San Antonio Elem	
Inter-District	176	64	21	24	38	11	10	41	40	91	16	27	19	51	14	25	35	703
Adelante II Academy	2	97	59	4	18	2	38	1	2	5	0	2	3	3	1	1	3	241
Aptitud Academy	9	13	219	3	11	0	1	1	3	5	3	2	1	0	6	2	4	283
Cassell Elem	18	9	11	207	15	0	6	9	5	0	5	3	23	4	1	7	2	325
Chavez Elem	4	22	8	5	193	0	1	2	4	25	1	4	0	2	8	0	21	300
Cureton Elem	22	2	1	1	20	207	3	2	61	4	17	17	0	3	7	5	1	373
Dorsa Elem	15	12	5	6	10	0	230	8	1	11	1	0	7	2	1	4	3	316
Hubbard Media Arts Academy	17	11	1	6	10	2	17	365	3	8	2	3	14	0	1	0	2	462
Linda Vista Elem	24	7	0	2	17	18	2	7	281	2	3	46	1	12	17	1	2	442
Lyndale Elem	17	5	10	2	16	14	2	0	15	12	218	16	0	10	18	5	5	365
McCollam Elem	5	2	2	0	19	8	4	1	9	3	0	253	0	25	9	0	9	349
Meyer Elem	11	13	2	13	15	1	5	11	4	10	0	4	190	0	2	1	4	286
Painter Elem	4	4	2	2	11	1	3	1	8	8	4	19	1	160	8	0	11	247
Russo McEntee Academy	8	11	6	5	19	6	1	4	14	15	7	11	3	32	243	0	6	391
Ryan STEAM Academy	88	6	5	9	15	7	1	1	3	3	13	15	17	1	3	200	0	387
San Antonio Elem	5	11	15	6	25	1	2	1	3	50	7	14	2	15	9	4	151	321
Total Attending	425	289	367	295	452	278	326	455	456	252	297	436	281	320	348	255	259	5,791
Intra-Ins	249	128	127	64	221	60	86	49	135	161	63	156	72	109	91	30	73	1,874
Inter-Ins	176	64	21	24	38	11	10	41	40	91	16	27	19	51	14	25	35	703
Total In-Flow	425	192	148	88	259	71	96	90	175	252	79	183	91	160	105	55	108	2,577
Intra-Outs	0	144	64	118	107	166	86	97	161	0	147	96	96	87	148	187	170	1,874
Net Transfers	425	48	84	-30	152	-95	10	-7	14	252	-68	87	-5	73	-43	-132	-62	703
% In-Flow Students		66.4%	40.3%	29.8%	57.3%	25.5%	29.4%	19.8%	38.4%		26.6%	42.0%	32.4%	50.0%	30.2%	21.6%	41.7%	44.5%
% Out-Flow Students		59.8%	22.6%	36.3%	35.7%	44.5%	27.2%	21.0%	36.4%		40.3%	27.5%	33.6%	35.2%	37.9%	48.3%	53.0%	32.4%

Attendance Matrix

**Middle Schools
Student Residents & Enrollment**



Students in
Boundary &
Enrollment
Comparison

Utilization Chart

► The following chart shows the current and projected utilization rates for each school. It has been color coded with blue representing schools with a utilization rate of under 70%, yellow representing a utilization rate of at least 70% but under 80% and red for the schools that have over 100% utilization

School Facility Utilization

	Net	Net CR	2021/22	2027/28	2021/22	2027/28
	Classrooms	Capacity	Current Enrollment	Projected Enrollment	Current Utilization	Projected Utilization
Elementary Schools						
Cassell Elem	29	710	295	215	41.5%	30.3%
Chavez Elem	32	797	452	207	56.7%	26.0%
Cureton Elem	32	783	278	229	35.5%	29.2%
Dorsa Elem	28	696	326	272	46.8%	39.1%
Linda Vista Elem	34	810	456	404	56.3%	49.9%
LUCHA	13	336	252	210	75.0%	62.5%
Lyndale Elem	31	775	297	286	38.3%	36.9%
McCollam Elem	28	674	436	375	64.7%	55.6%
Meyer Elem	30	727	281	247	38.7%	34.0%
Painter Elem	27	688	320	280	46.5%	40.7%
Russo McEntee Academy	34	835	348	297	41.7%	35.6%
Ryan STEAM Academy	23	558	255	232	45.7%	41.6%
San Antonio Elem	22	558	259	271	46.4%	48.6%
Sub-Totals	363	8,947	4,255	3,525	47.6%	39.4%
Middle Schools						
George Middle	29	899	420	276	46.7%	30.7%
Ocala STEAM Academy	32	971	379	211	39.0%	21.7%
Renaissance Academy at Fischer	42	1,260	416	285	33.0%	22.6%
Renaissance Academy at Mathson	37	1,126	484	306	43.0%	27.2%
Sheppard Middle	35	1,085	507	389	46.7%	35.9%
Sub-Totals	175	5,341	2,206	1,467	41.3%	27.5%
TK-8 Schools						
Adelante Dual Language Academy	20	539	504	398	93.5%	73.8%
Adelante II Academy	24	619	300	229	48.5%	37.0%
Aptitud Academy	22	582	413	352	71.0%	60.5%
Hubbard Media Arts Academy	37	1,036	478	272	46.1%	26.3%
Sub-Totals	103	2,776	1,695	1,251	61.1%	45.1%
District Totals	641	17,064	8,156	6,243	47.8%	36.6%

Assisted Over 300 School Districts in CA

Contact Information:

Ken Reynolds, President

E-mail: ken@schoolworksgis.com

8700 Auburn Folsom Rd, #200
Granite Bay, CA 95746

Phone: (916) 733-0402

Website: www.SchoolWorksGIS.com

